



VILLAGE OF SPRING GROVE POLICE DEPARTMENT

7401 Meyer Rd ~ Spring Grove, Illinois 60081
815-675-2596 ~ Fax 815-675-2320

Chief of Police
Michael Niedzwiecki

June 26, 2025

Fourth of July Parade Entrants,

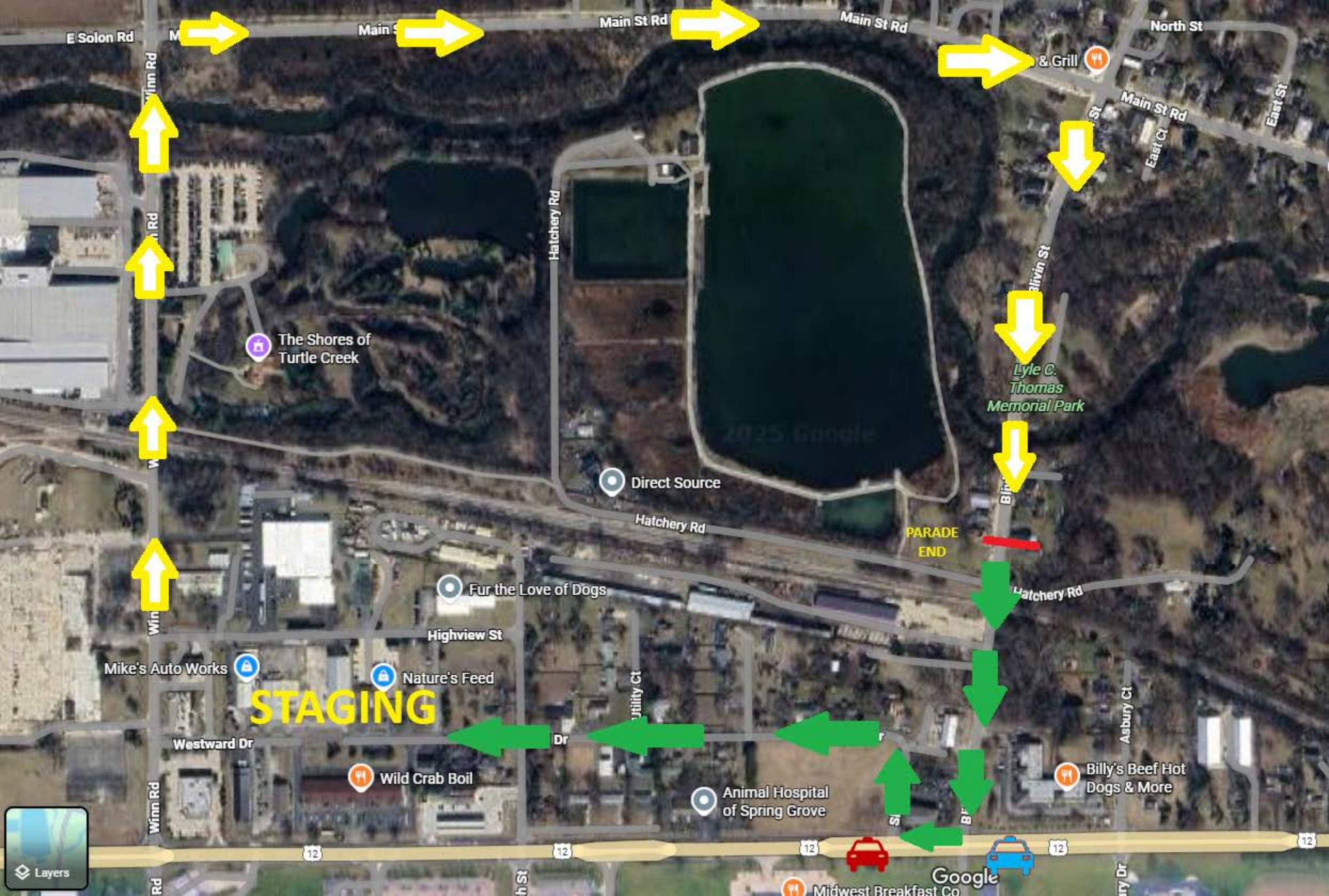
In the final reviews of the upcoming Fourth of July events, a notable change has been put in place by the Spring Grove Police Department. Due to welcomed yearly growth of the 3rd of July Concert in Horse Fair Park and the 4th of July Parade, it was ultimately decided to change the last leg of the parade route. The parade will now be turning ***south onto Blivin Street*** instead of north on Richardson Road.

This change was made first and foremost to ensure the safety of not only spectators, but most importantly the parade participants. Due to the large increases in attendance and parade participation, ending the parade at Horse Fair Park is no longer a feasible option due to several reasons. First and most importantly, the Park is not large enough to handle both spectator parking and the parade participants. Additionally, there is not enough space for the larger vehicles to safely turn around within the park without posing a risk of property damage and create a safety hazard for those walking within the park. Both factors, combined with spectators attempting to leave the parking area prior to the conclusion of the parade, create an unmanageable, dangerous situation.

For the past five years, I have manned the entrance of Horse Fair Park directing traffic during and after the parade. I have tried many different approaches to remedy the abovementioned issues, but there is no workable solution to the problems. Sending the participants north on Richardson Road creates a logistical and safety issue due to participants stopping on the roadway or in the shoulder area creating an issue for the Spring Grove Fire Department while responding to calls for service. Increasing personnel at the entrance and within Horse Fair Park did not address the special problems of combining parking and parade participants in the same area.

With the new parade route, I am able to separate the two issues creating one area dedicated to only parking and creating a safe path for participants to disperse upon completion. Participants will be funneled to their original starting location, creating easy, accessible solutions to be reunited at their point of origin.

To ensure this safe path, personnel will be positioned at the parade route end, on Blivin St, and at the intersection of Rt. 12 and Blivin Street. Personnel will direct traffic and assist participants onto Rt. 12 allowing them to safely travel the 190ft until they are able to turn onto Short Steet. Once on Short Street participants can then travel to their original rally point and disperse in a safe, controlled area.



E Solon Rd

Main St Rd

Main St Rd

Main St Rd

North St

Main St Rd

East St

Winn Rd

Winn Rd

Winn Rd

Winn Rd

Winn Rd

Winn Rd

Winn Rd

Hatchery Rd

Hatchery Rd

Blivin St

Hatchery Rd

Asbury Ct

Highview St

Westward Dr

Dr

12

12

12

12

12

The Shores of Turtle Creek

Direct Source

Fur the Love of Dogs

Mike's Auto Works

Nature's Feed

STAGING

Wild Crab Boil

Animal Hospital of Spring Grove

Lyle C. Thomas Memorial Park

PARADE END

Billy's Beef Hot Dogs & More

Midwest Breakfast Co

Google

Layers